



VOLVO & HS-Schoch:

**This must be love.**

**HS Schoch**  
*Truck accessories/truck styling*





# This must be love.

Being a trucker means much more than just driving day after day from A to B and back via C. Being a TRUCKER means your job is your vocation in life.

For a real truck driver, his truck is not only his workplace or tool, it is his "home from home", his daily companion.

En route on strange roads in foreign countries, his truck is often his only comrade in the long lonely nights.

No wonder real attachment grows. Two that belong together can get very close.

And of course every driver wants to be seen on the road with a truly attractive companion. One that is so eye-catching that it steals the show from other road-users.

For all this and more, **HS-Schoch** is the right address. Especially our exclusive stainless steel range makes trucker hearts beat faster – and converts "dull", often inconspicuous trucks into true personalities.

Bull-catchers, lamp brackets, sidepipes, wheel accessories and compressed air horns made of finest V2A stainless steel ensure you make a distinctive, spectacular impact.

This catalog also contains high tops, cab bunks, spoilers, sun-screens, stowage facilities and a huge range of other practical articles which aim at making life easier and ensuring your safety on the highway.

**All based on the HS-Schoch motto:  
"Quality over price"**

You're in for a pleasant surprise.



**HS Schoch**  
*Truck accessories/truck styling*

# Made by HS-Schoch



Even in times like these when the range of products is more diversified and extensive than ever before, it is important to know who one is dealing with.

With **HS-Schoch** you are always on the safe side. Take advantage of our long experience and our know-how in truck accessories that we have acquired and advanced over the years.

Our products are developed in close cooperation with the manufacturers of utility vehicles, ensuring that our accessories are optimally coordinated to the specific vehicles and comply with the latest design and safety standards.

All **HS-Schoch** bull-catchers, lamp brackets, sidepipes, etc. have been developed and are produced in our own works.

This ensures that you are always close to base.

Especially our stainless steel range will give your truck that special "plus" and is guaranteed to attract attention. Quality workmanship and top design, with everything mirror-polished by hand make sure of that.

But these are only a few of the reasons for choosing products from **HS-Schoch**.

**HS-Schoch** means quality at fair prices. And our high standard of quality extends not only to our products, but also to our service.

With us, you are definitely on the safe side.



## HS Schoch

Truck accessories/truck styling





# More than a feeling

Truck-styling puts your truck in the limelight, turning it into an impressive visiting card its owner can be proud of.

## Bull-catcher FH Quick mounting. Mounting on original points. TÜV certification



**FH 12-16** Bull-catcher with lower bow, from 2002 model up  
Order No. **5002 3220**



**FH 12-16** Bull-catcher **STANDARD** from 2002 model up  
Order No. **5002 3221**



**FH 12-16** up to model 02 Bull-catcher **MEGA** Order No. **5002 3204**  
**FH 12-16** up to '02 Bull-catcher **STANDARD** without lower bow Order No. **5002 3203**

## Consoles FH/FM from 2002 model up



**centre**, root-wood  
Order No. **1021 0408**  
**centre**, black  
Order No. **1021 0407**



**right**, black  
Order No. **1021 0409**  
**right**, root-wood  
Order No. **1021 0410**

## Consoles FH/FM up to model 02



**centre**, root-wood  
Order No. **1021 0402**  
**centre**, black  
Order No. **1021 0401**

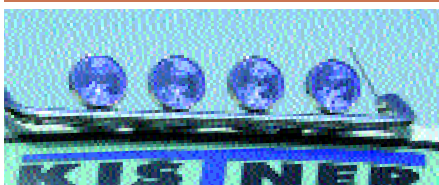


**right**, black  
Order No. **1021 0403**  
**right**, root-wood  
Order No. **1021 0404**

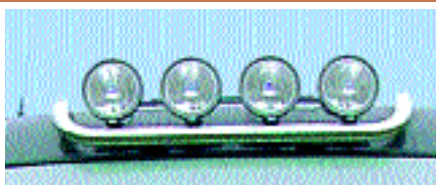


With right-hand drawer, root-wood Order No. **1021 0406**  
With right-hand drawer, black Order No. **1021 0405**

## Spotlamp brackets FH Installation without removing roof lining. Without Spotlamp.



**FH Globetrotter cab, top**  
Order No. **1650 3029**

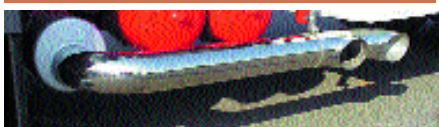


**FH Globetrotter cab XL, top**  
Order No. **1650 3026**



**FH Spotlamp bar, bottom** from 2002 model up  
Order No. **1650 4013**

## Sidepipe FH V4A stainless steel



**FH 12 doppelt. Ausgang** Order No. **1650 5005**

## Sun vizor FH Special with fastening

**FH 12/16**  
Position lamps front Order No. **1700 5052**  
Position lamps side Order No. **1700 5053**  
**FH 12/16 Globetrotter** Order No. **1700 5054**

## Side window wind deflector FH

**FH 12/16** Order No. **5001 0017**

## Hub caps



**Hub cap, normal**  
Order No. **1650 2000**



**Hub cap, centre steel rim:** **1650 2021**  
**alu rim:** **1650 2022**



**Hub cap, high steel rim:** **1650 2016**  
**alu rim:** **1650 2017**

## Wheel nut caps



**Wheel nut caps**  
RMK 27: **1650 1090**  
RMK 30: **1650 1100**  
RMK 32: **1650 1210**  
RMK 33: **1650 1310**  
**Lamp cowling**  
**1650 3000**



All **stainless steel parts** are mirror-polished by hand.



**Bring more colour into your life:**  
Powder-coating in colour of choice possible.  
RAL colours without extra charge. Please state colour shade.

A wide selection of stowage boxes are shown on page 617

**Bull-catcher FL**



**FL Bull-catcher STANDARD**  
Order No. **5002 3205**



**Aerokit FL 4-6**



Order No. **1500 0020**

**Sleeping pod Type N FL 6**



Built-on cab, short cab  
Order No. **2100 130401**

**Quality/High standard equipment:**

- Knockout roof-light
- Clothes hook
- Ashtray
- 2 side sliding windows

**Aerokit FH**



**FH Globetrotter** Order No. **1600 150495**

**Side panelling A 2000 FH**



**FH 16 3.700mm** Order No. **1800 370495**  
**FH 12 3.700mm** Order No. **1800 370497**

**Sun vizor**



**FL 7-10** Order No. **1700 5050**  
**FL 4-6** Order No. **1700 5051**

**FH Spotlamp bar, bottom**



up to 1999 model Order No. **1650 4006**



**Spotlamps**



**HELLA RALLYE 3000**  
**blue** Ø 220 mm  
Order No. **3674 3221**



**PREDATOR** Ø 211 mm  
Order No. **3674 1795**  
**blue** Order No. **3674 1797**



**Clamp** for mounting spotlamps  
60mm Order No. **2000 1430**  
76mm Order No. **2000 1431**

**Spotlamp brackets FL**



Spotlamp bar, **bottom**  
Order No. **1650 4012**

**Cover rings**

**Ornamental hub caps**



**Cover ring, closed**  
For aluminium and steel rim  
6-hole 17,5": **1650 1802**  
8-hole  
17,5"+19,5": **1650 1805**  
steel rim 22,5": **1650 1800**  
alu rim 22,5": **1650 1801**

**Cover ring, open**  
For aluminium and steel rim  
17,5": **1650 1806**  
steel rim  
22,5": **1650 1803**  
alu rim  
22,5": **1650 1804**

**Ornamental hub cap**  
Rear axle  
17,5": **8060 32045**  
19,5": **8060 32035**  
22,5": **8060 32055**

**Ornamental hub cap**  
Front axle  
17,5": **8060 32040**  
19,5": **8060 32030**  
22,5": **8060 32050**

**Ornamental hub cap**  
Rear axle new  
22,5": **8060 42055**

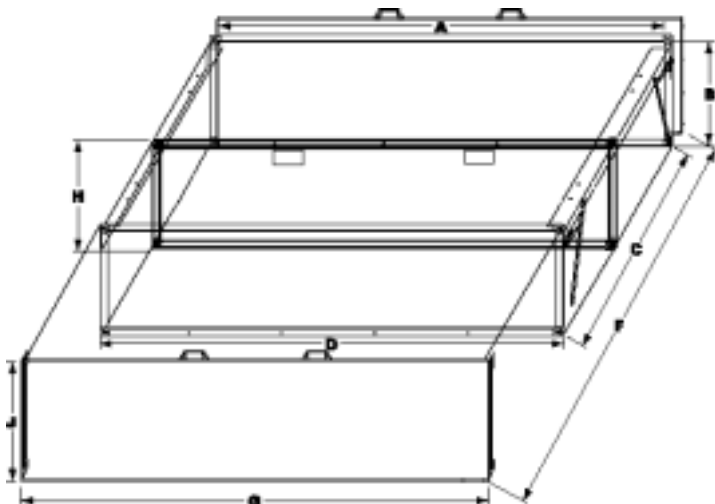
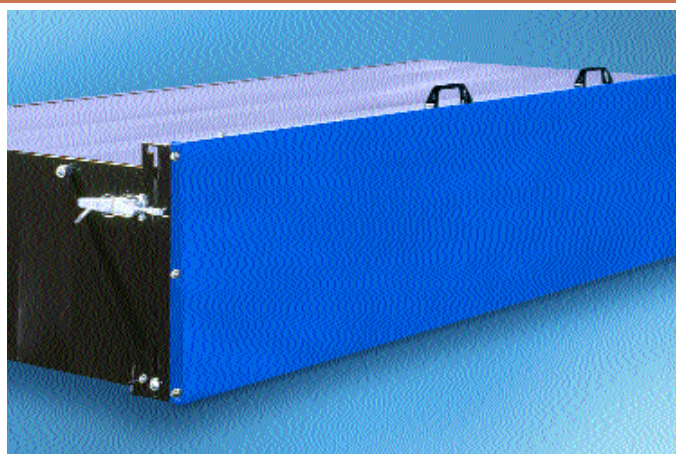
**Ornamental hub cap**  
Front axle new  
22,5": **8060 42050**



# All aboard

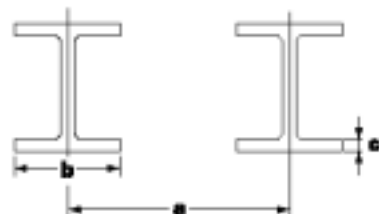
No journey can really start until everything is »on board«. And in a context applicable for freight traffic, the proverb »As you make your bed, so you must lie in it« could be adapted to »As you load your truck, so you will travel«. To ensure that you can travel the roads of Europe safely and with confidence, **HS-Schoch** have developed perfect stowage systems you can rely on.

**Pallet stow box PK 2000** light empty weight, low structural height and long service life; TÜV certification



**Measure H:**

Dimension from lower edge of member to lower edge of pallet storage box



**Drilling dimensions/Installation instructions:**

Please specify the three dimensions shown in the sketch when you place your order: (a) = centre-to-centre distance between frame members; (b) = lower flange width; (c) lower flange thickness. The stretch clamps supplied allow you to bolt the boxes underneath any trailer or semi-trailer.

	A	B	C	D	F	G	H	J
Pallet stow box 08 EP	1230	450	2450	1310	2490	1345	480	525
Palettenstaukasten 16 EP	1960	450	2450	2040	2490	2075	480	525
Pallet stow box 20 EP	2460	450	2450	2540	2490	2575	480	525
Pallet stow box 24 EPK	1960	605	2450	2040	2490	2075	635	675
Pallet stow box 24 EP	2630	450	2450	2710	2490	2745	480	525
Pallet stow box 30 EP	2630	560	2450	2710	2490	2745	590	623
Pallet stow box 30 EPN	2630	560	2450	2710	2490	2745	560	623
Pallet stow box 30 EPK	2460	605	2450	2540	2490	2575	635	675
Pallet stow box 32 EP	3430	450	2450	3510	2490	3545	480	525
Pallet stow box 36 EP	2630	605	2450	2710	2490	2745	635	675
Spare wheel box	1520	490	2450	1600	2490	1625	490	560



Powder coating in RAL-, HKS-, NCS- and own colours; effect finishes also possible.



The new pallet stowage box from HS-Schoch has been vested with eternal youth. Its body of hot-galvanized sheet metal with cathodic electro-dipcoated surfaces, including zinc-phosphating and powder-coating on request, is resistant to the customary aging and deterioration process. Rust doesn't stand a chance! To provide you with additional assurance in your decision in favour of HS-Schoch stowage boxes we have introduced the **6+3 Guarantee**, which warrants the box against rusting through for a period of 6 years and 3 months in accordance with our guarantee provisions.

### Spare wheel box



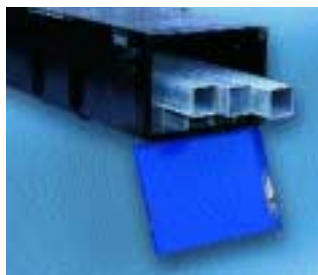
For convenient loading and unloading by one person.  
Order No. **PK2000 0001**

### Box for electric lift truck



With retractable loading ramp.  
Suitable for mounting on articulated tow trucks or trailers.  
Trailer Order No. **7175 180101**  
Articulated tractor Order No. **7175 180201**

### Stanchion box



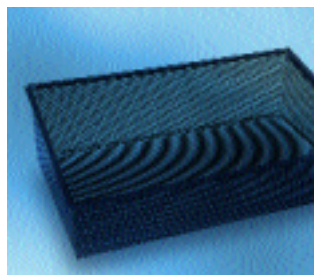
Always accessible and still optimally stowed.  
360x280x2.325 mm:  
Order No. **7175 2320**  
360x280x1.975 mm:  
Order No. **7175 1975**

### Joloda boxes



Well loaded means half the job done.  
660x300x2.080 mm  
Order No. **5812 8880**

### Box for tarpaulins/nets



For container vehicles  
600x290 mm/360x500 mm  
Order No. **7206 0506**  
1.000x210 mm/310x600 mm  
Order No. **7206 0606**

### Tool box

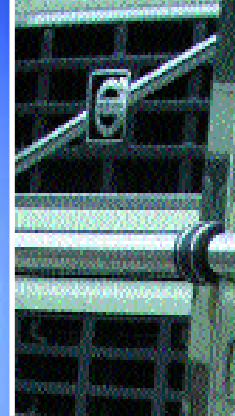


Individual sizes and versions.  
Order No. **7100 0000**

### PU-Boxes

<b>Tool box 101</b>	440 mm x 400 mm x 480 mm	Order No. <b>4000 0020</b>
<b>Tool box 102</b>	600 mm x 450 mm x 480 mm	Order No. <b>4000 0021</b>
<b>Tool box 103</b>	750 mm x 430 mm x 450 mm	Order No. <b>4000 0022</b>
<b>Tool box 104</b>	750 mm x 430 mm x 550 mm	Order No. <b>4000 0023</b>
<b>Tool box 105</b>	1040 mm x 490 mm x 480 mm	Order No. <b>4000 0024</b>
<b>Tool box 106</b>	750 mm x 290 mm x 450 mm	Order No. <b>4000 0025</b>
<b>Tool box 107</b> with carrier for cross-type socket wrench	680 mm x 670 mm x 530 mm	Order No. <b>4000 0026</b>
<b>Triangular bracket</b> to be mounted on chassis		Order No. <b>4000 0030</b>
<b>Fire extinguisher box 200</b> For 6kg and 9kg fire extinguisher		Order No. <b>4000 0029</b>
<b>Fire extinguisher box 200</b>	313 mm x 674 mm x 257 mm	Order No. <b>4000 0035</b>
<b>Fire extinguisher box 200</b>	1040 mm x 490 mm x 480 mm	Order No. <b>4000 0028</b>





[www.hs-schoch.de](http://www.hs-schoch.de)

**HS Schoch**

*Truck accessories/truck styling*

- Aerokits
- Bull-catchers
- Compressed air fanfares
- Consoles
- Floor mats
- High-tops
- Root-wood trim
- Side window wind deflector
- Side panelling
- Sidepipes
- Sleeping pods
- Spotlamp brackets
- Stowage boxes
- Sun vizors
- Wheel accessories
- Work platforms

